

School Meal Programs in Latin America & the Caribbean

 **\$3.65** Billion Budget

COVERAGE

55% of primary and secondary school age children benefit from school feeding programs, a higher coverage rate than any other region.*

63 million children received some food through their schools.

88% Primary school age coverage






24% Secondary school age coverage

Statistics reported here cover

23 of the countries in Latin America and the Caribbean, which together hold

80% of the population of the region.

The highest levels of primary and secondary school age coverage are found in

 Brazil (92%)	 Barbados (65%)
 Chile (68%)	 Ecuador (62%)
 Honduras (65%)	

Countries with National Laws, Policies, or Standards Related to School Feeding

National School Feeding Policy
74%

Health
35%

Agriculture
30%

Nutrition
65%

Food Safety
57%

Private Sector
22%

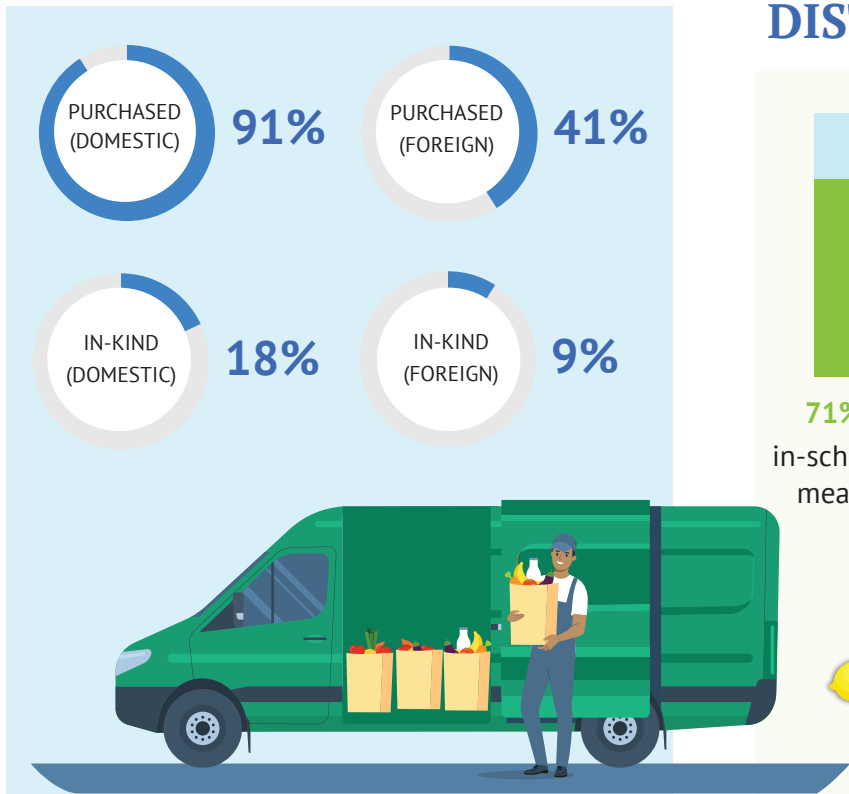


Dedicated Line Item in National Budgets

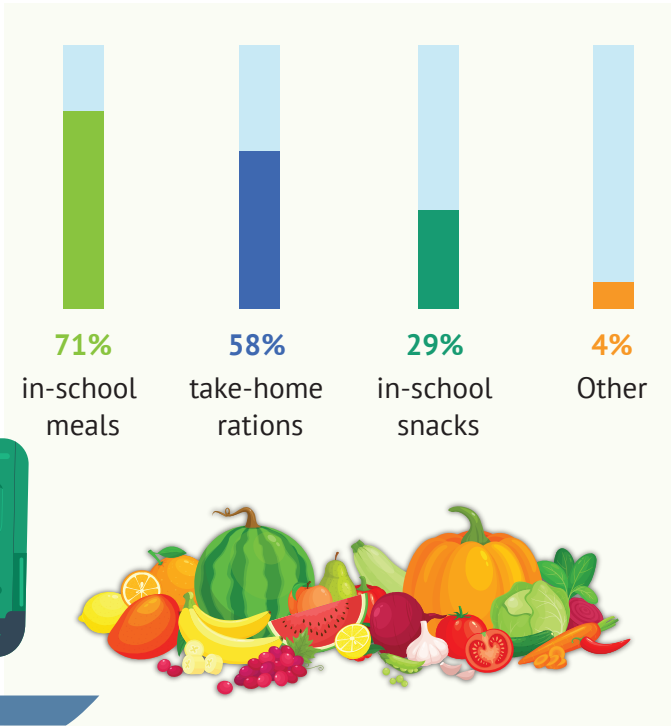
There is often a positive relationship between having a dedicated line item and the coverage of school feeding.



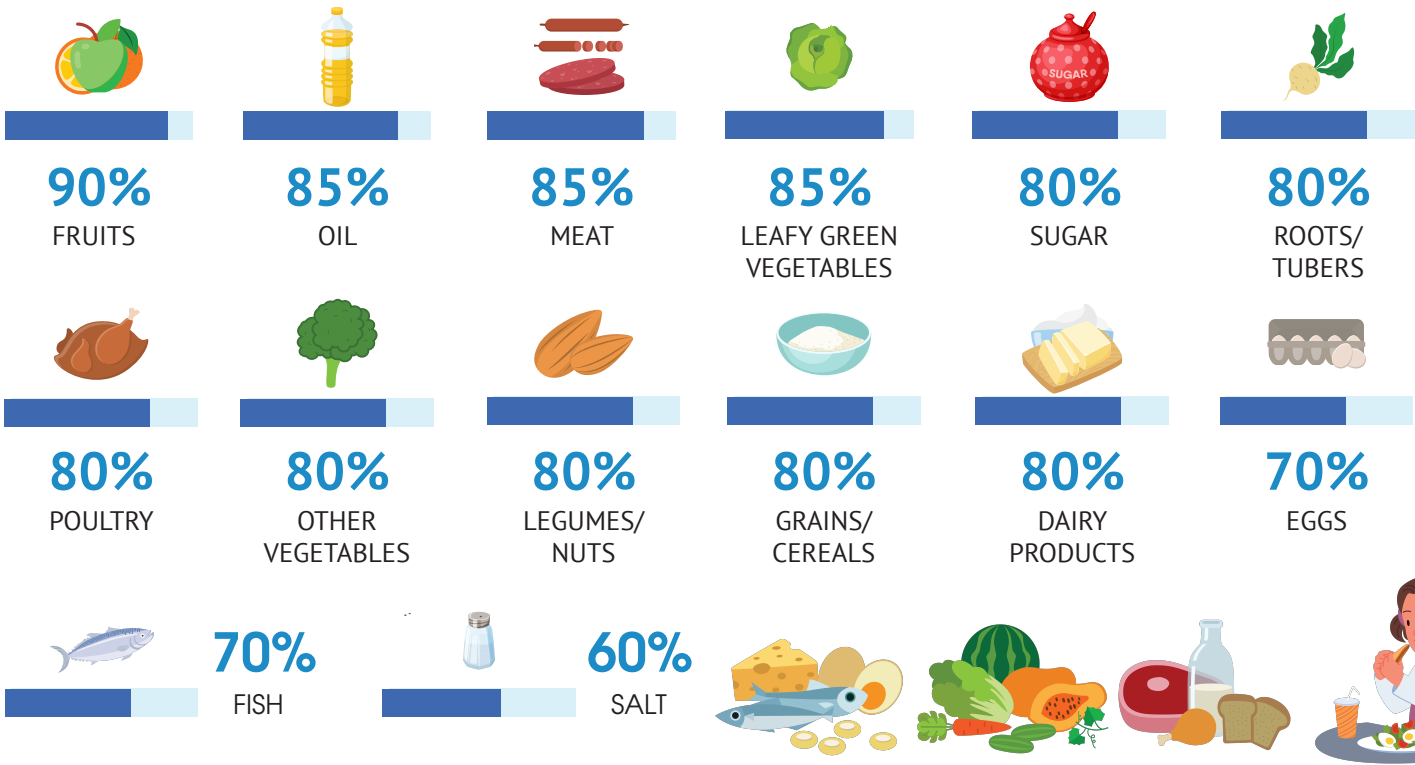
FOOD SOURCES (% of programs)



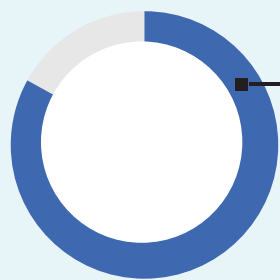
METHODS OF FOOD DISTRIBUTION (% of programs)



FOOD BASKET (% of programs)

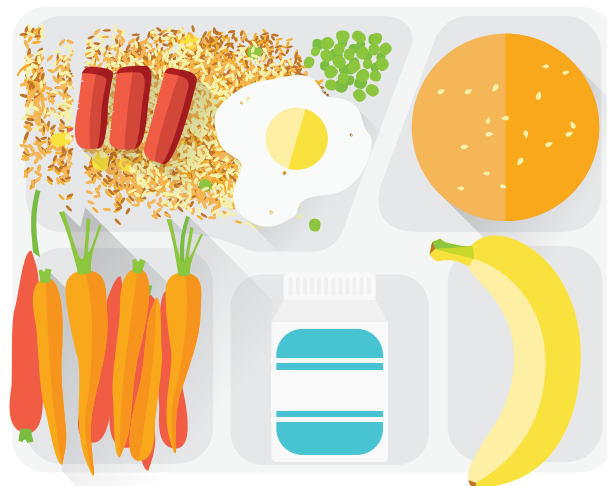


INVOLVEMENT OF FARMS



83%

of programs engage farmers in school feeding programs, higher than in any other region* of the world.



EXAMPLES:

In **Brazil**

100% of food is procured domestically, with a minimum of 30% purchased from small-scale family farmers.

In **Guatemala**

family farmers are prioritized in food procurement.

In **Saint Kitts and Nevis**

members from the School Meals Establishment, the Central School Farm, the Department of Agricultural, and the Ministry of Health oversee school feeding activities.

In **Ecuador**

at least 30% of school food must be purchased from vulnerable sectors of the population, and from micro, small, and medium-sized enterprises.

In **Chile**

some school food must be purchased from peasant family farmers or other local producers, with the value ranging from 3.5%–5.25% across different territories.



U.S. DEPARTMENT OF AGRICULTURE



The analysis is based on the **Global Survey of School Meal Programs** © database. See **School Meal Programs Around the World: Results from the 2021 Global Survey of School Meal Programs** ©

<https://gcnf.org/global-reports/> for regional comparisons.

*Comparative regions are Sub-Saharan Africa; South Asia, East Asia, & Pacific; Middle East & North Africa; Europe, Central Asia & North America.

Suggested Citation: Global Child Nutrition Foundation (GCNF). 2022. School Meal Programs in Latin America and the Caribbean. Accessed at

<https://gcnf.org/infographics-and-tools/>

For more information,

visit <https://gcnf.org> or contact info@gcnf.org.