



COVID-19: How partners are safely getting food to school-age children and their families

Working with the Government of Sierra Leone to Respond and Adapt School Feeding Strategies for COVID-19, Lessons learned from Ebola Crisis

*Daniel Mumuni
Chief of Party, USDA/MGD Food for Education.
Sierra Leone*

faith. action. results.

About CRS – facts and figures

IMPACT

76 YEARS OF SERVICE
.....
114 COUNTRIES
.....
6,700 GLOBAL STAFF
.....
127.3M PEOPLE SERVED
.....
1,953 PARTNERS
.....

\$1 BILLION IN REVENUE*



7%
FUNDRAISING,
AWARENESS AND
ADMINISTRATION

Sean L. Callahan
President & CEO

*Named Among Top Charities
of 2018 by Forbes Magazine.

OUR PROGRAMMING



AGRICULTURE

4.7 million | PEOPLE SERVED

117 | PROJECTS

49 | COUNTRIES



CAPACITY STRENGTHENING

0.9 million | PEOPLE SERVED

212 | PROJECTS

53 | COUNTRIES



EDUCATION

4.9 million | PEOPLE SERVED

66 | PROJECTS

36 | COUNTRIES



EMERGENCY

9.9 million | PEOPLE SERVED

196 | PROJECTS

57 | COUNTRIES



HEALTH

94.4 million | PEOPLE SERVED

107 | PROJECTS

39 | COUNTRIES



JUSTICE & PEACEBUILDING

2.9 million | PEOPLE SERVED

64 | PROJECTS

34 | COUNTRIES



MICROFINANCE

2.8 million | PEOPLE SERVED

85 | PROJECTS

41 | COUNTRIES



WATER & SANITATION

7.2 million | PEOPLE SERVED

52 | PROJECTS

30 | COUNTRIES

CRS Education Portfolio in FY2018

- Education during emergencies & conflict
- Food for Education
- Child literacy development
- Other education programs



LITERACY

We improve literacy by:

- Building teachers' competencies in literacy pedagogies and use of materials
- Strengthening the capacity of parents, communities, and PTAs
- Integrating the needs of vulnerable children



EMERGENCIES

CRS supports education during emergencies and conflict by:

- Ensuring adequate infrastructure & supplies;
- Providing psychosocial support and recreational activities
- Improving educational quality



SCHOOL FEEDING

Our "Food for Education" programs provide daily school meals to children, focusing on:

- Increasing access to education
- Improving learning and achievement
- Mobilizing communities



OTHER PROGRAMMING

- Early Childhood Development (ECD)
- Inclusive education
- Gender & Education
- Youth & Learning
- WASH and school health

In FY18, CRS implemented **66** education projects in **36 countries**, reaching **5 million** participants

2016-2018



615,000 School
Children Enrolled



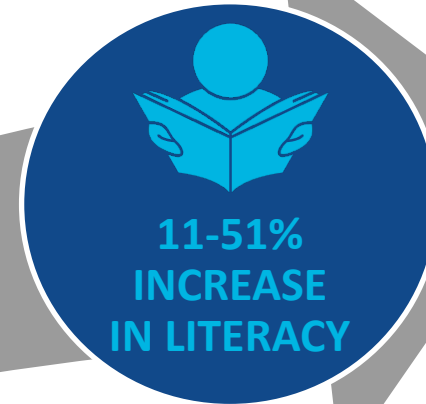
130M School
Meals Served



2.2M Teaching
and Learning
Materials
Distributed



25,800 Teachers
and School
Administrators
Trained



11-51%
INCREASE
IN LITERACY

Increase in literacy from baseline to end line



Sierra Leone
8%→59%
($\Delta=51\%$)



Benin
0.7%→12.6%
($\Delta=12\%$)

Honduras
18%→29%
($\Delta=11\%$)



Burkina Faso
15%→33%
($\Delta=18\%$)



CRS working in partnership during Ebola

The West Africa Ebola crisis of 2014-15 killed more than 11,000 people, caused economic and social disruption in a massive scale,

left tens of thousands of children orphaned

schools were closed for nine months, resulting in a lost year of learning



Schools used as holding centers

“Ebola has made me stop going to school”

Reduced health system access and utilization

Household food insecurity

Poor caretaking and infant young feeding practices

Implementation challenges during nutrition response





Factors that worked during crisis

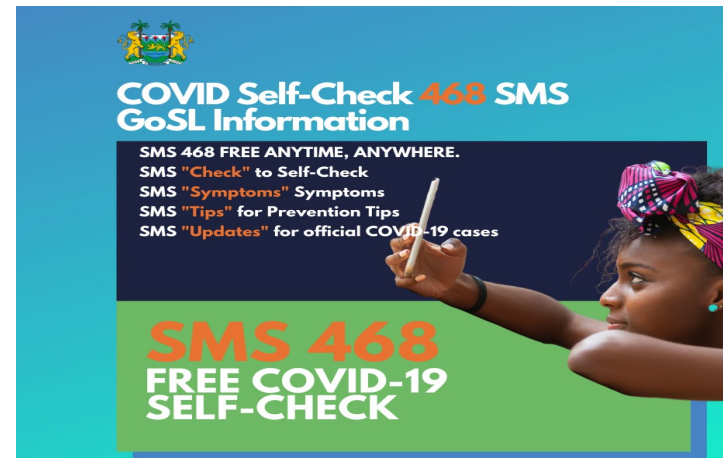
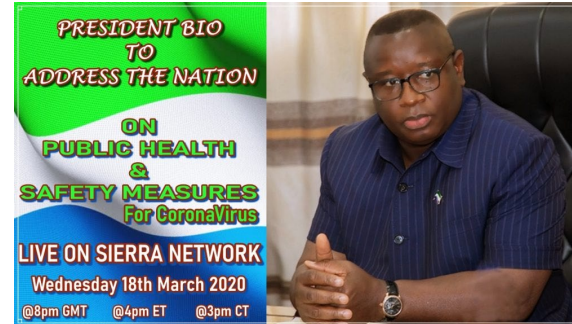
- Political Will
- Increased funding
- Food assistance
- Enhanced Coordination*
- Standard Operating Procedures
- Partner support – eg. CRS/USDA intervention



COVID-19: Current Situation in Sierra Leone

Corona na bad bad sickness...

Earlier today, government announced the latest leg of measures which included that schools and other learning institutions throughout Sierra Leone will close today, indefinitely.

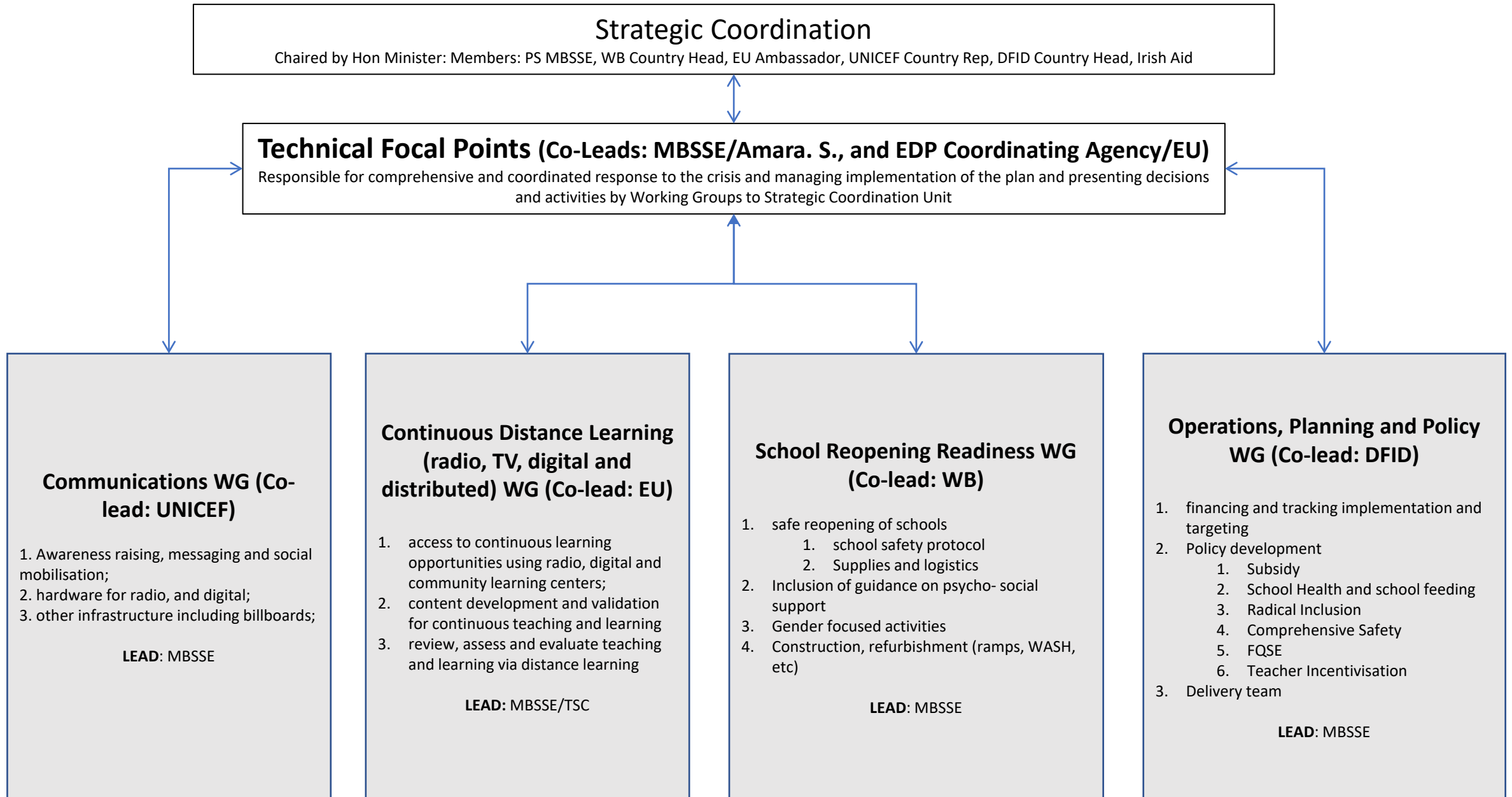


A photograph of three men standing in a warehouse filled with large white sacks, likely containing food or supplies. The man on the left is wearing a light blue button-down shirt and a white surgical mask. The man in the middle is wearing a yellow and black striped shirt and a colorful patterned face mask. The man on the right is wearing a pink button-down shirt and a white surgical mask, and is gesturing with his hands as if speaking. The background is a dense stack of white sacks with red and blue markings.

Government Response

- Providing Leadership and overall management of crisis
- Ensuring coordination at national and sub-national level
- Setting up specific working groups
- Triggerring restrictions and protocols are in place and enforced
- Providing information and public assurance

Ministry of Basic and Senior Secondary Education Emergency Operating Centre





CRS Global response for COVID-19 in education

1. **Prioritize health/well-being of learners, teachers, families** (-> *School Reopening Readiness WG & Operations, Planning and Policy WG*);
2. **Ensure continuity of learning** (-> *Continuous Distance Learning (radio, TV, digital and distributed WG)*)
3. **Support safe return and ensure successful transition** (-> *School Reopening Readiness WG*)





Implementing clear SoP
and guidelines





2 METERS
APART
BUT TOGETHER

Tenki Tenki